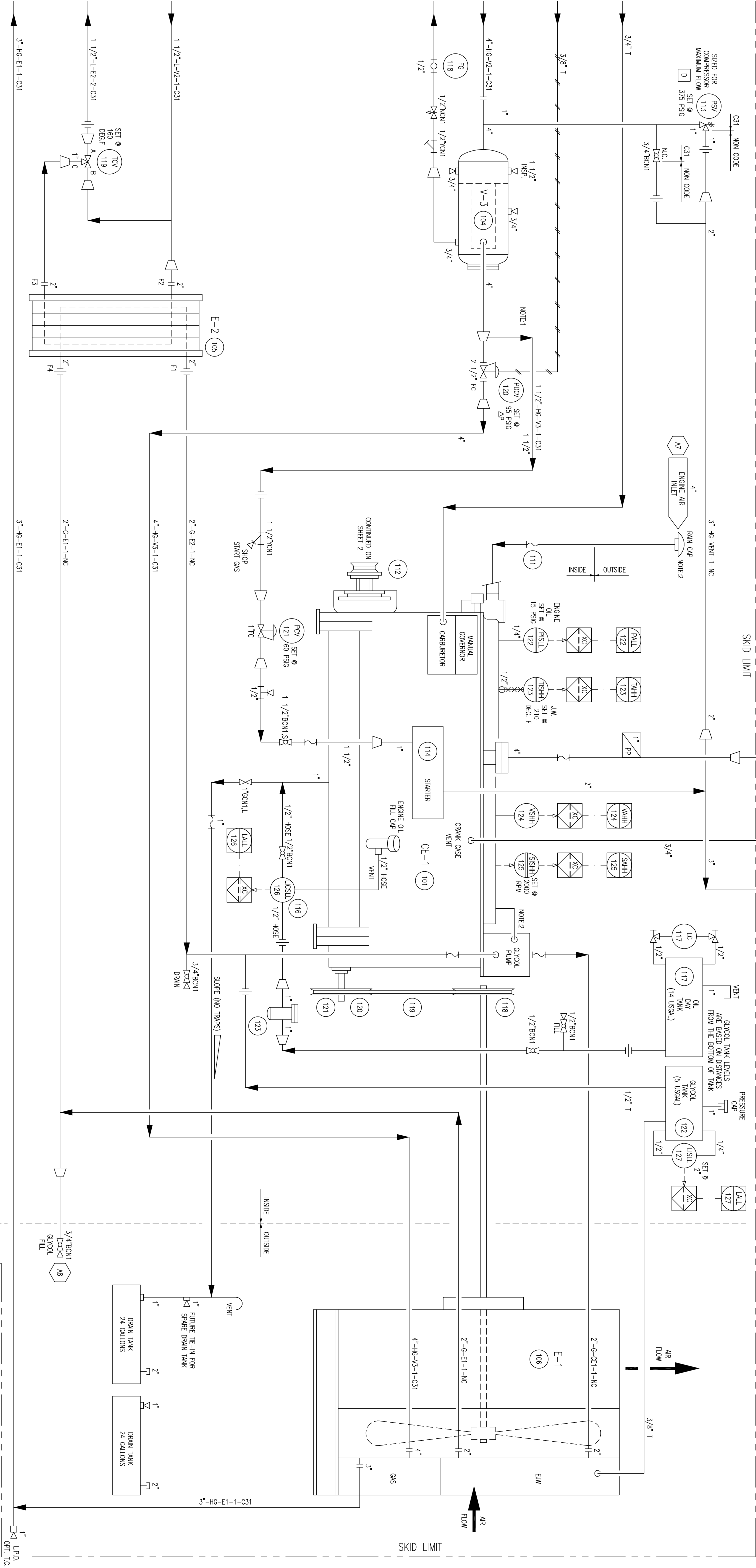


V-3
SECONDARY OIL SEPARATOR
OIL-COL. MODEL COSM-205-1
SIZE: 18" O.D. X 40" S/S
M.A.W.P.: 400 PSIG @ 400 DEG.F
M.D.M.I.: -20 DEG.F @ 400 PSIG
C.A.: 0.0625"
DRY WEIGHT: 450 LBS.
ELEMENT: (1) RSC-1140-3

E-2
OIL COOLER
MODEL: VEX V20-SS-FMR-2-75
PLATES: 59
M.A.W.P. OIL SIDE: 400 PSIG @ 250 DEG.F
M.A.W.P. GLYCOL SIDE: 400 PSIG @ 250 DEG.F
DESIGN DUTY: 234153 BTU/HR
SURFACE AREA: 122.7 FT2
OPERATING WEIGHT: 1054 LBS.

CE-1
COMPRESSOR ENGINE
CATERPILLAR MODEL 3306NA
135 HP @ 1800 RPM
NO. OF CYLINDERS: 6
BORE & STROKE: 4.75" & 6.00"
DISPLACEMENT: 638 CUBIC INCHES
CARBURATION: NATURALLY ASPIRATED
SPEED: 900 TO 1800 RPM
WEIGHT: 2000 LBS.



E-1
GLYCOL COOLER/ATERCOOLER
TYPE: AR-X-HEMPHILL
MODEL: 48 FT
GLYCOL COIL: 14 PSIG @ 300 DEG.F
AFTERCOOLER COIL: 400 PSIG @ 300 DEG.F
M.D.M.I.: -20 DEG.F @ 400 PSIG
FAN: 6 BLADES 48" DIA.
FAN SPEED: 763 RPM
FAN HP: 8.1 HP
TOTAL AIR FLOW: 22597 SCFM
DRY WEIGHT: 2900 LBS



SKID LIMIT

1" L.P.D.
OPT. T.C.

		PERMIT TO PRACTICE STAMP		ENGINEER STAMP		FOR:	
						BURLINGTON RESOURCES	
						135HP – SE	
						COMPRESSOR UNIT	
						FRICK 151N COMPRESSOR	

				TITLE:	
DRAWN BY: GORD HOWE		DATE: SEP 10, 2004		P & I FLOW DIAGRAM	
CHKD. BY: D. ROUSSEAU		SCALE: N/A		FOR:	
APPR. BY: D. ROUSSEAU		W.O. No.: 11603101			
CLST. PO. No.:					
DWG. No.: 11603-101		BURLINGTON RESOURCES 135HP - SE COMPRESSOR UNIT FRICK 151N COMPRESSOR			
SHEET No.: 3 OF 4		F:			

NOTE:1 START GAS CONNECTION FROM TOP OF PIPE
NOTE2 SUPPLIED WITH ENGINE

TITLE: P & I FLOW DIAGRAM
FOR: BURLINGTON RESOURCES
135HP - SE
COMPRESSOR UNIT
FRICK 151N COMPRESSOR
DWG. No.: 11603-101
SHEET No.: 3 OF 4
REV: 2